

BTEC L2 Tech Award Health & Social Care



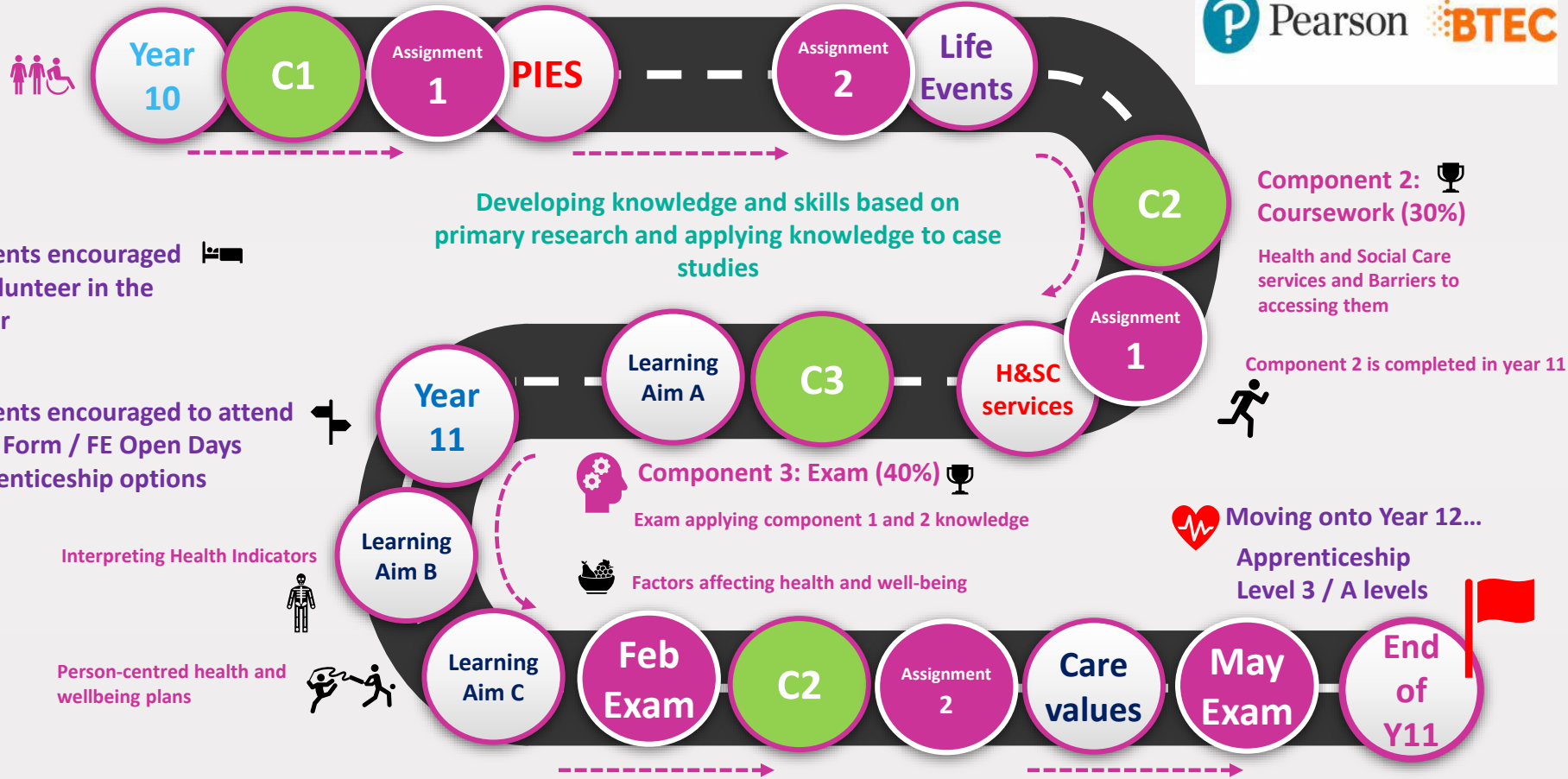
The two-year journey starts...

Students enrol onto the course in September

Component 1: Coursework (30%)

Human Lifespan and Factors affecting growth and development

Life events and supporting individuals



Students encouraged to volunteer in the sector

Students encouraged to attend Sixth Form / FE Open Days Apprenticeship options

Component 2: Coursework (30%)

Health and Social Care services and Barriers to accessing them

Component 2 is completed in year 11

Moving onto Year 12... Apprenticeship Level 3 / A levels

Developing transferrable skills

Including: communication, team working, management and leadership, planning and organisation, empathy, time management, taking initiative, adaptability and flexibility, problem solving, research



Care values and reviewing practice
1-1 and Group role play activity

Students have the opportunity to resit the exam component to improve their grade